



VRdirect ▶

The Enterprise Virtual Reality Solution

New Work Enabler

How Virtual Reality helps shaping the workspace of the future

The way we work, communicate and interact with each other is constantly evolving and has been subject to particularly substantial change due to the global COVID-19 pandemic. The 'New Normal', the post-pandemic reality shaped by home office, travel restrictions and heightened social and environmental awareness, requires HR departments worldwide to adapt and change the way they work. Virtual Reality plays a key role in New Work initiatives, and VRdirect supports enterprises by making the technology accessible and usable in a variety of use cases:

Employee Branding

- Nestlé created an interactive 360° portal for external & internal stakeholders, providing information about the company, it's history and locations
- Nestlé uses the VRdirect platform as an innovative information tool to visualize and communicate its innovation story



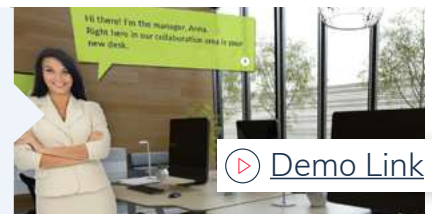
Recruiting

- A German sports car manufacturer uses Virtual Reality to attract new talents and make potential employees get in contact with their brand
- They hosted their last annual recruiting day entirely in a virtual environment enabled by VRdirect



Onboarding

- A large international consulting firm uses VRdirect to onboard and train new employees
- Virtual office tours and presentations about company values provide vivid guidance for new hires



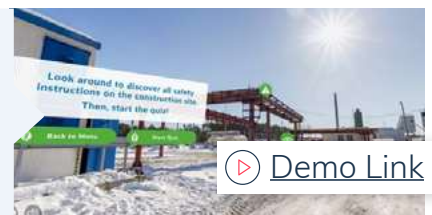
Education & Training

- One of Germany's most important airports uses VRdirect to train their ground handling staff
- A large German sports car manufacturer replicates the entire training in Virtual Reality, creating a VR training library with VRdirect



Environment, Health & Safety

- A large German industry conglomerate uses VRdirect as their central VR hub, with all Virtual Reality (esp. training) solutions combined in one application
- Their gamification-based virtual escape room helped them receive an award for exceptional workplace safety



Available on all devices



www.vrdirect.com | contact@vrdirect.com



VRdirect

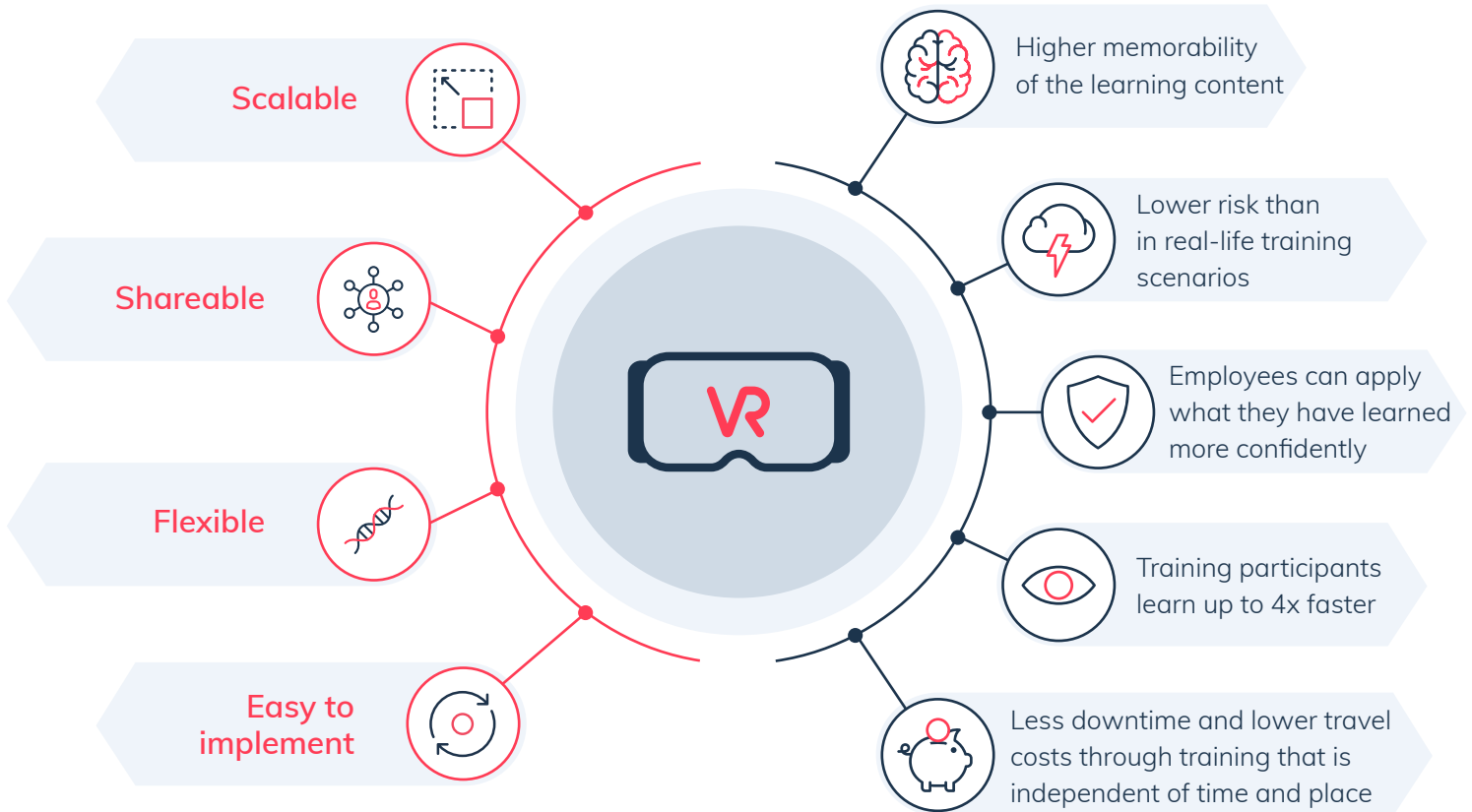
The Enterprise Virtual Reality Solution

New Work Enabler

How Virtual Reality helps shaping the workspace of the future

Virtual Reality in Enterprise Training

Advantages of Virtual Reality Training



The VRdirect Platform

The easiest solution to create and publish Virtual Reality projects



Easy to use - no expert skills needed



Enables many **VR use cases**



Enterprise Readiness

Get in touch today to discuss your Virtual Reality strategy with us: vrdirect.com

Available on all devices



VRdirect

www.vrdirect.com | contact@vrdirect.com